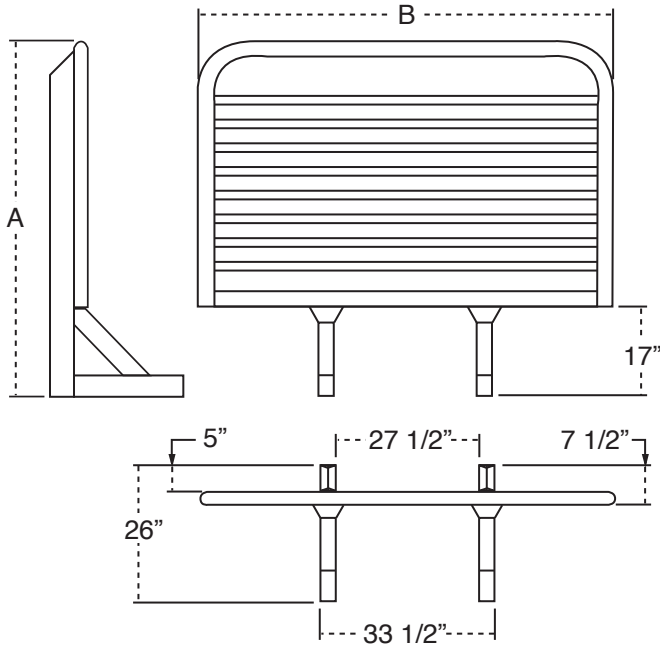




# Merritt Headache Racks

## HR001-HR006 Technical Specifications

TrucknTow.com Product Specifications



	HR001	HR002	HR003	HR004	HR005	HR006
<b>Part A</b>	68"	68"	68"	68"	73"	75"
<b>Part B</b>	70"	76"	86"	80"	78"	86"

### Dynaclamp Mounting Kits:

Designed for most installation needs

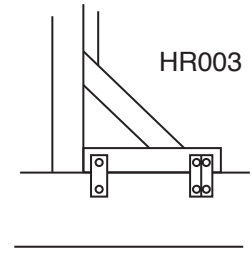
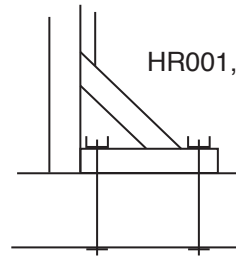
HR001 – 17" U-bolts (for Frame Rails 11" deep or less)

HR002 – 21" U-bolts (for Frame Rails over 11" deep)

### Problem Solver Kit:

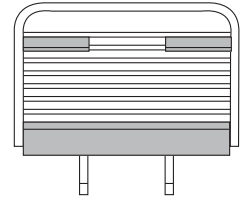
Designed for difficult installations in and around air tanks, hanger brackets, crossmembers, fuel tanks, etc

HR003 – Problem Solver Angled Bracket Kit



### Deluxe Option, HR001D – HR006D :

Deluxe option Headache Racks include a full length tray and two locking chain racks



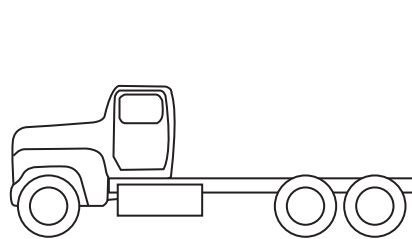
Part#	Description	Wt. (lbs)	Load Resistance*
HR001	Radius Corner	122	25,030 lbs
HR002	Radius Corner	125	25,695 lbs
HR003	Radius Corner	130	26,009 lbs
HR004	Radius Corner	128	23,798 lbs
HR005	For Mack CH series	133	23,042 lbs
HR006	Radius Corner	140	22,519 lbs

\*Tested to resist a maximum uniformly distributed static load

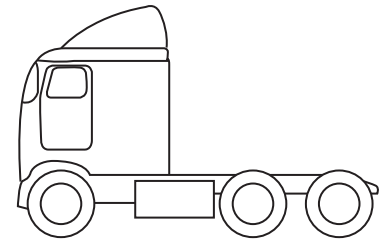
### Warning: Limited Resistance Test

Each model Headache Rack has been designed and tested in conjunction with a Merritt mounting kit. Each model has been tested to resist a maximum uniformly distributed static load as stated above.

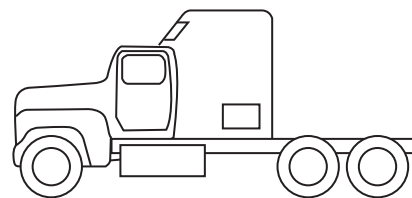
Each model offers limited resistance against impact. Merritt Equipment Co. makes no representations, implied or otherwise, except for the uniformly distributed static load resistance test as stated above. Any load or force in excess of the uniformly distributed static load resistance test may result in failure of this product which can result in serious injury or death.



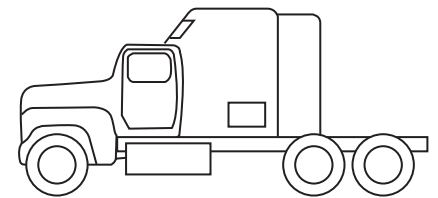
HR001, HR002  
Conventional Without Sleeper



HR003, HR004, HR006  
COE With Sleeper



HR003, HR004, HR006  
Conventional With Sleeper



HR004  
COE & Conv. With Sleeper  
and Fairing Extensions